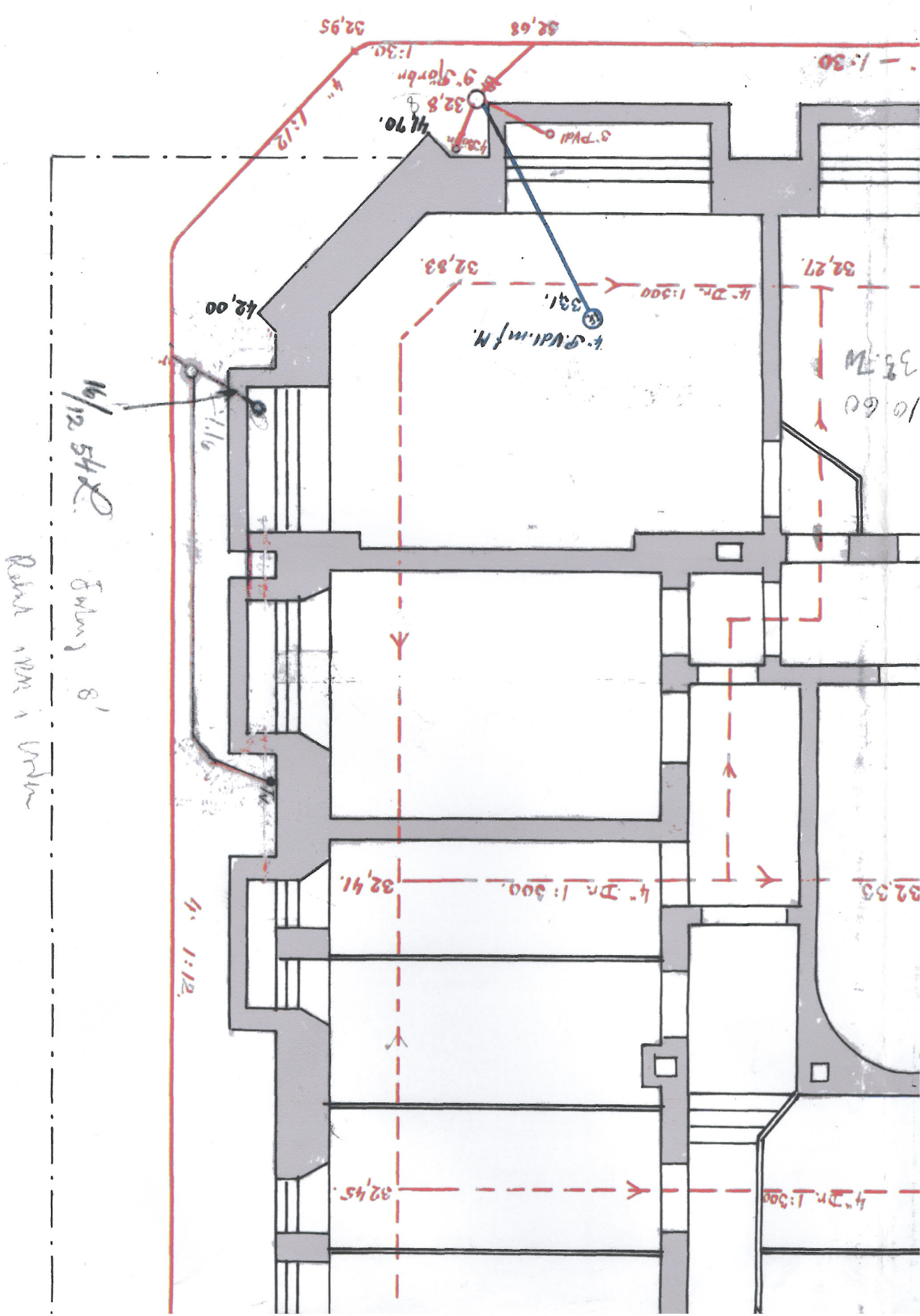


July 14.7



16/12 542  
 July 8'  
 Room 1001 & 1002

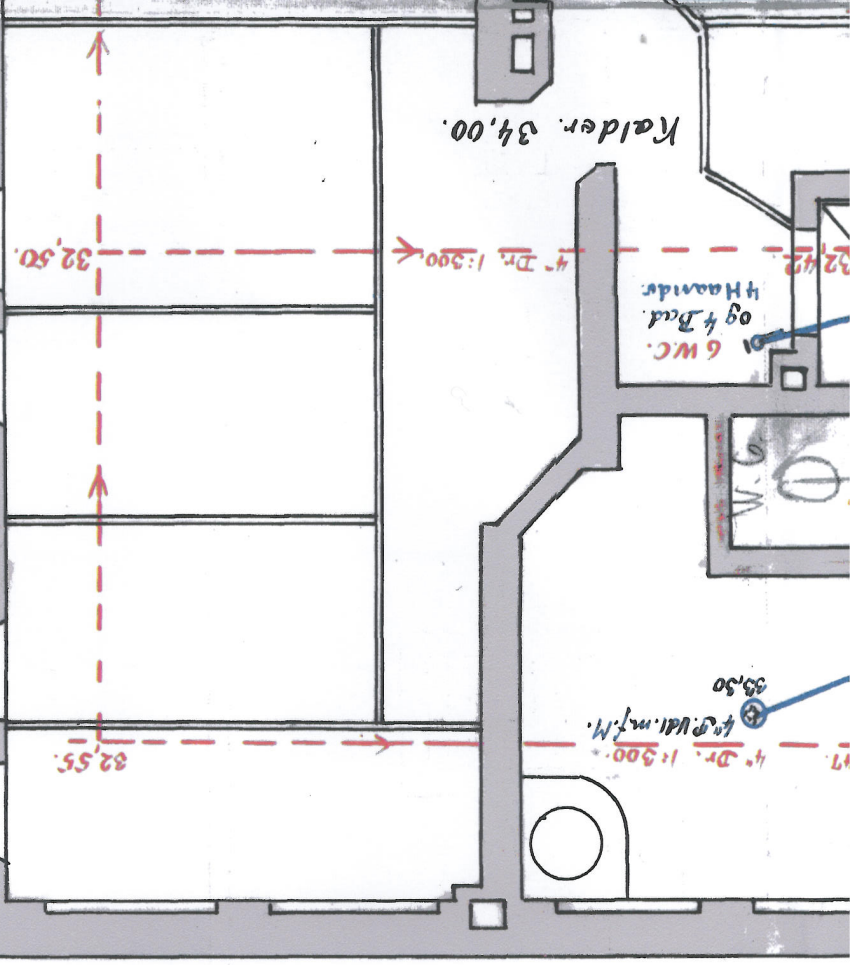
10.60  
 38.70

25  
30  
35  
40  
45  
50 stlen.

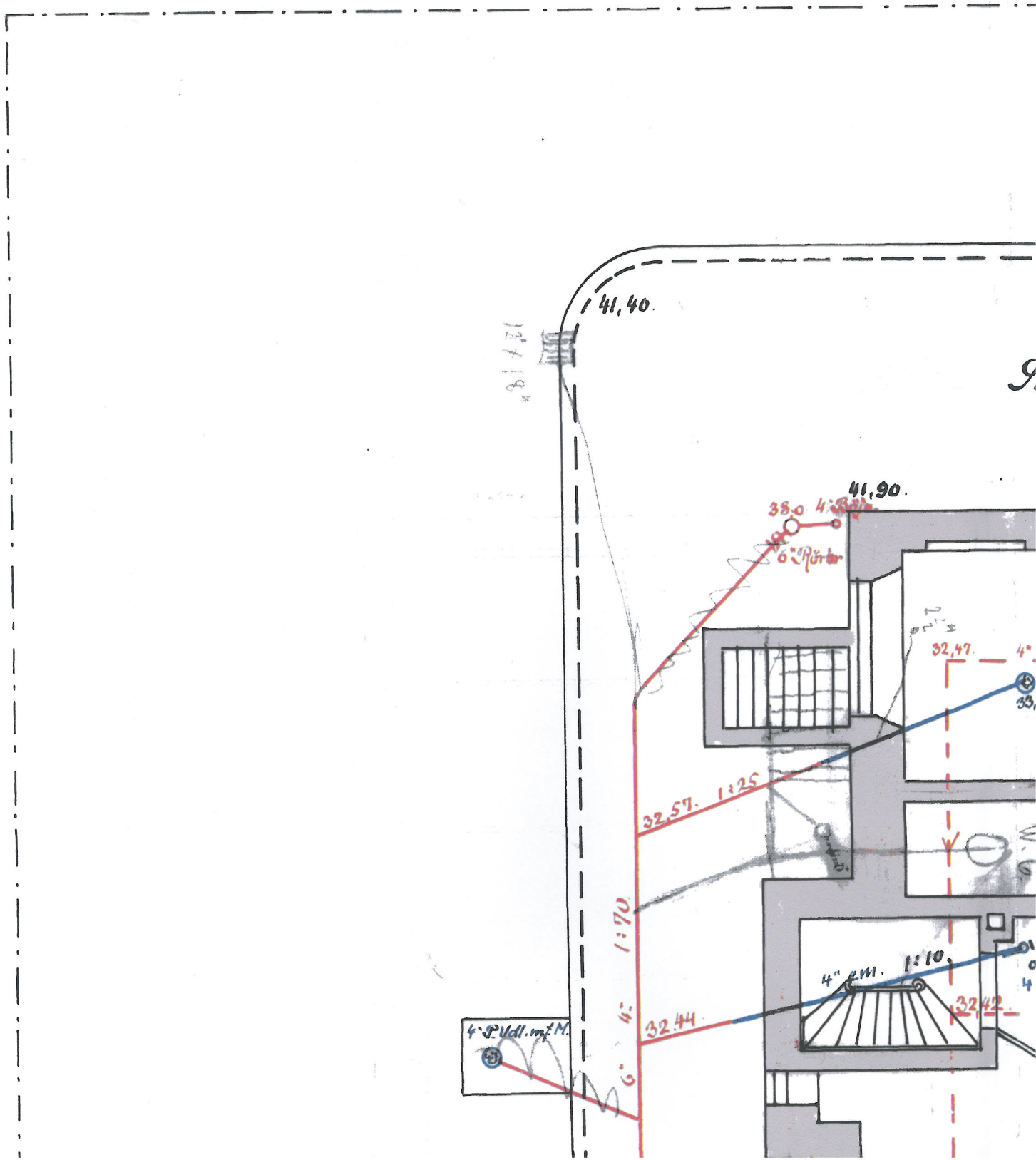
6" Ø 39,15  
4" Ø 39,15  
Porrer

1/3,08

1/3,65

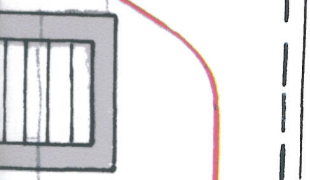


stfalt

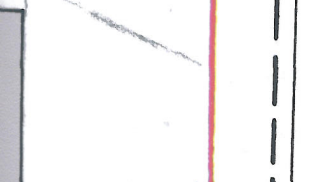


39,25

6" Forbr.



4" 1:50  
32,02



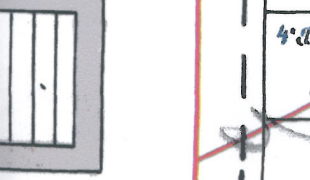
4"  
6"  
31,90

Asfalt.  
6" - 1:70

6" Forbr.



31,47



B. ca. 980

39,03

39,65

31,45 4" Dr. 1:300.

31,38

4" P.Vd. m.f. N.  
32,40

4" Bøjn.  
6" P.  
37,0

4" Bøjn.  
6" P.  
36,0

31,41 4" Dr. 1:300.

6 WC.  
og 4 Bad R.  
4 Haande 32,70

31,33

5 KV.  
R. 10

31,36 4" Dr. 1:300.

31,28

Følger  
7,8

5" P.Vd.

31,31 4" Dr. 1:300.

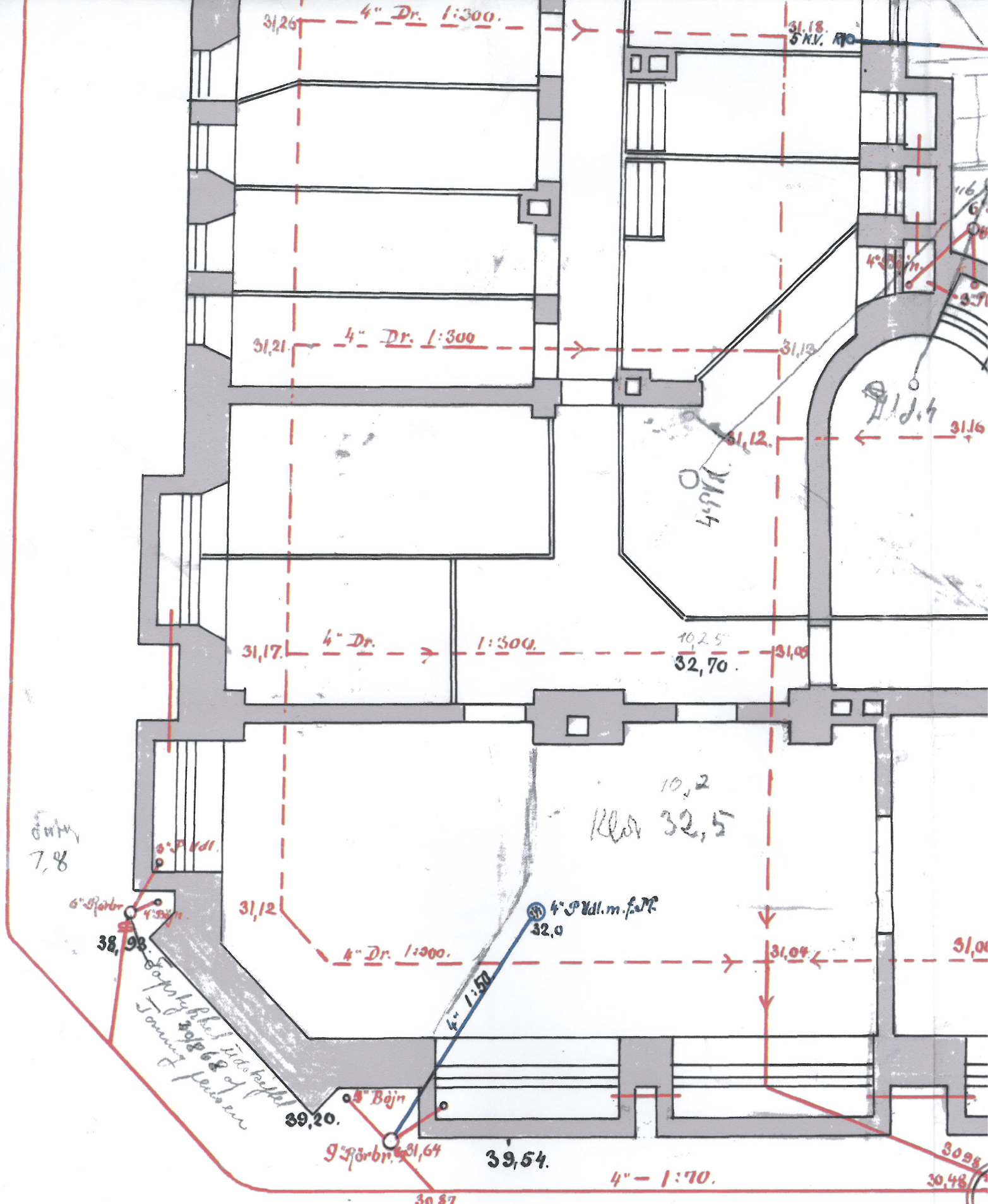
4 WC.  
og 4 Bad R.  
4 Haande

31,25

9" P.Vd. 4" Bøjn.  
32,0

Kalder 33,00.

32,02  
4" P.Vd. m.f. N.



7,8

*Sops lyfðel í aðstoð  
Jannar þess*

*Fokur 142*

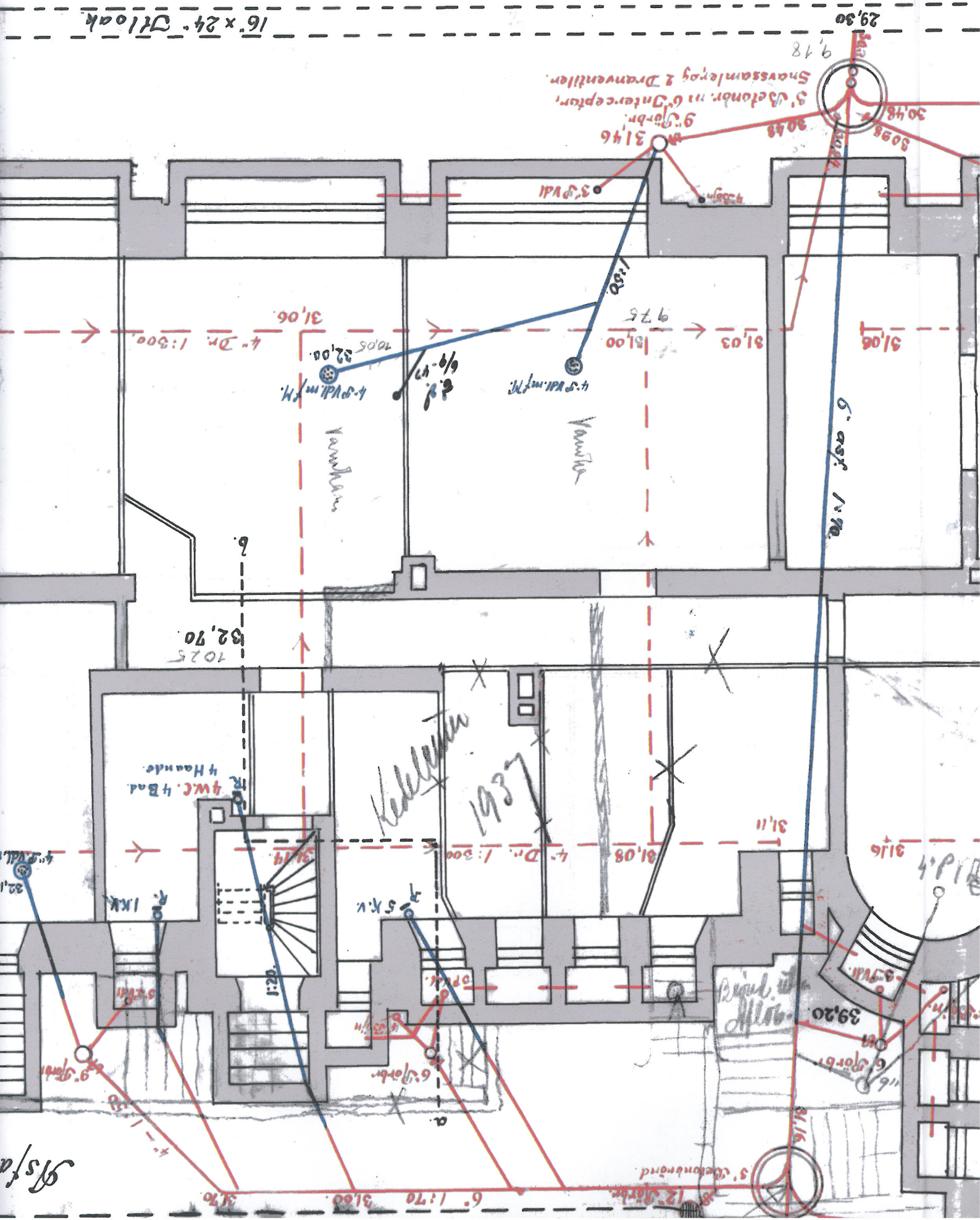


2.

16' x 24' Stlook  
40' x 62' cm

29.30  
9.2

3" Vektor in 6" Interceptor,  
Snowsamlerog 2 Drainventil.  
9" Gorb  
3146



4 WC. 4 Bad  
4 Haande

Küche  
1987

Stfa

